

EUROSYSTEM[®]

ALU

Revolutionising handling
using aluminium light profiles



The advantages of aluminium profiles!



▶ ERGONOMIC

Light rails means users can very easily and effortlessly handle heavy and cumbersome loads.

▶ ACCURATE

Accuracy is ensured through high quality manufacture and smooth movements.

▶ ANTI-CORROSION

The aluminium profiles are externally and internally anodised.

▶ ECONOMICAL

Reduce weight of supporting structure.

▶ TECHNOLOGICAL

The beam is the result of the latest innovations in cold extrusion and structure optimisation.

▶ ATTRACTIVE

▶ PRACTICAL

The beam is compatible with all ITEM standard accessories.

▶ LASTING

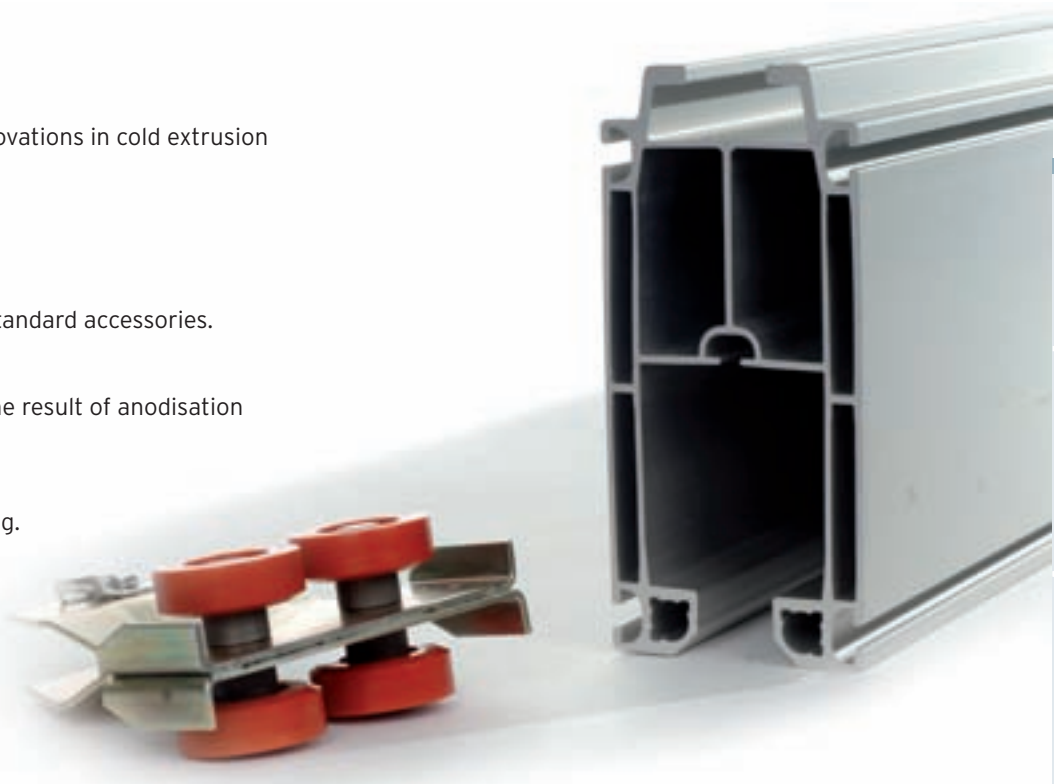
Strong resistancy to wear and tear is the result of anodisation and the roller materials.

▶ SAFETY

The beam is guaranteed without welding.

▶ SILENCE

Operates silently due to the precise manufacture of the movement surface.





3 sizes of beam:

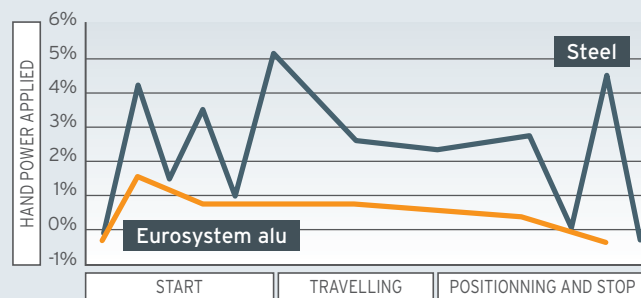
- > AL 6. 6 kg a meter, up to 320 kg
- > AL 10. 10 kg a meter, up to 2,000 kg
- > AL 14. 14 kg a meter, up to 2,000 kg



ALU EUROSISTEM in figures

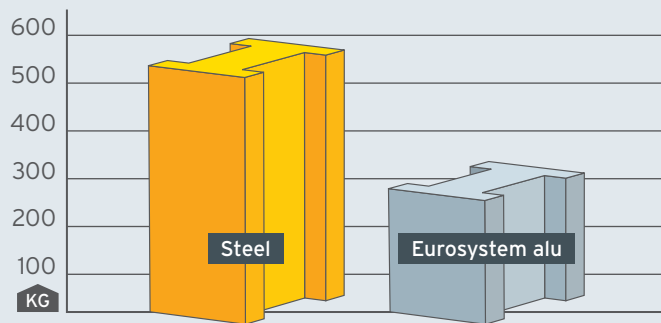
- > Materials 6063-T6 according to EN-AW standard
- > 20 micron anodisation A6C0
- > Extrusion tolerance of beams according to standard EN 12020
- > Complies with applicable regulations according to standard EN 13001, EUROCODE 9

> Better workstation ergonomics and increased productivity



Compared with steel rails, when manually moving loads, the movement coefficient of the trolley rollers is greatly reduced in order to minimise operator effort.

> Reduced cost of supporting structures
2 times lighter than its steel equivalent



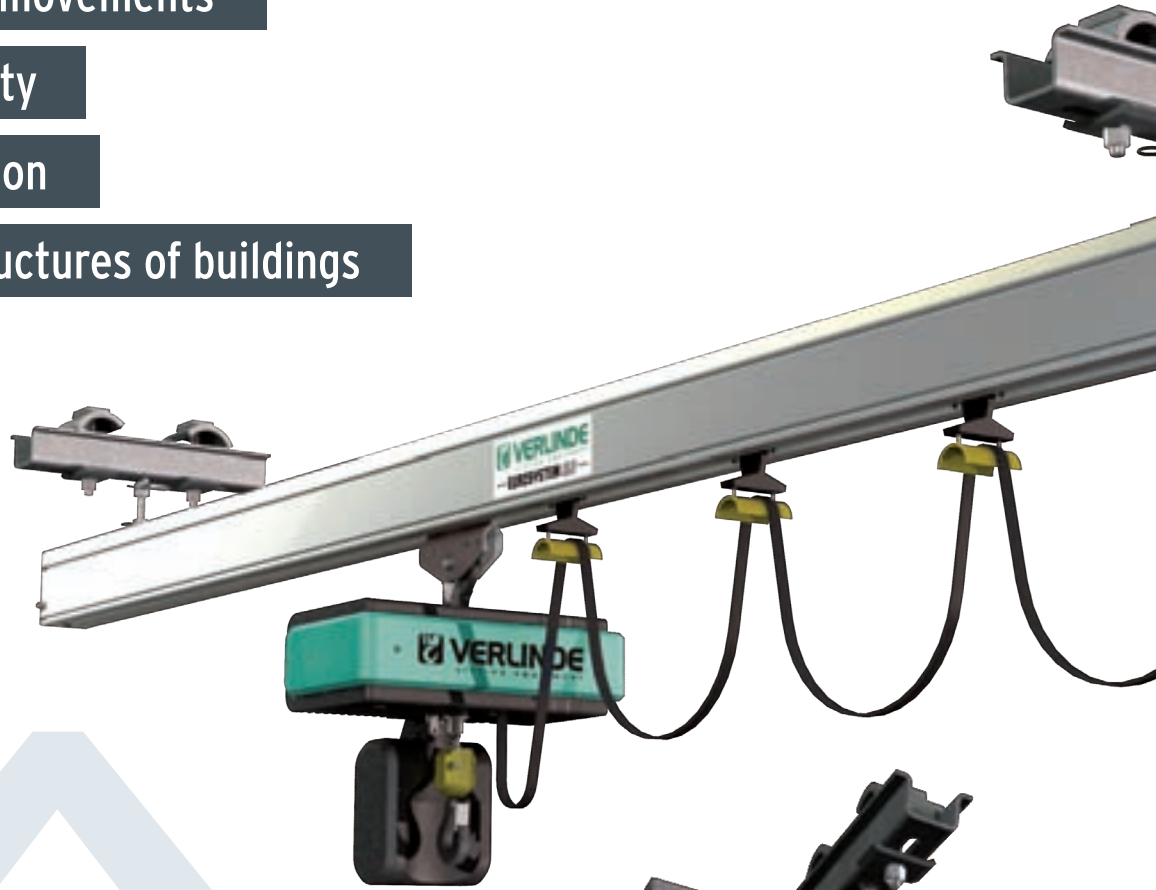
- > Easy to install and use
- > Economical for lifting structures

Greater accuracy of movements

Increased productivity

Ergonomic workstation

Savings in lifting structures of buildings



Monorail track up to 2000 kg loads

- > Simple solution for workstations where loads are moved on 2 axes.
- > Movement tracks and simple or complete circuit systems with direction changed by switch or turn table is also available.

Suspensions mean that the whole handling system can be fixed to a lifting structure. Several suspension types are available depending on the type of beam used and the type of the host structure.



Locking plates: can be dismantled, they act as a buffer, dust protection and they complete the attractiveness of the installation.

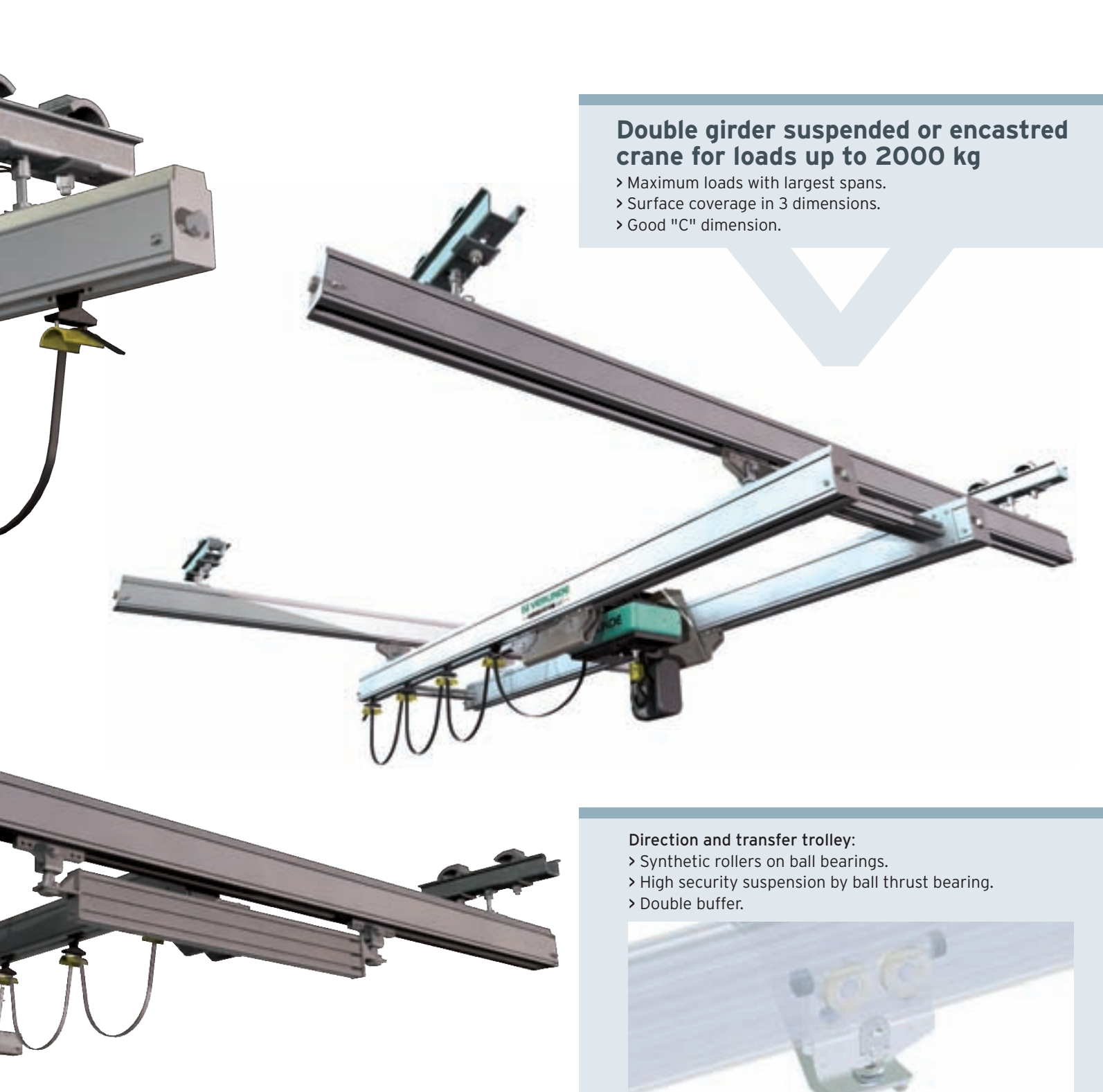


Joining of rails: a perfect cut, pin pointer, 16 point locking system which is easy to implement: one of the features that make the difference.



Single girder suspended or encasted crane for loads up to 2000 kg

- > To cover the largest surfaces in 3 dimensions.
- > Ready to be installed to optimise lifting height.



Double girder suspended or encasted crane for loads up to 2000 kg

- > Maximum loads with largest spans.
- > Surface coverage in 3 dimensions.
- > Good "C" dimension.

Direction and transfer trolley:

- > Synthetic rollers on ball bearings.
- > High security suspension by ball thrust bearing.
- > Double buffer.



Options (Available soon)

- > Curved rail for circuits.
- > Integral electrical supply.
- > Transfer system.

- > Switch.
- > Turn table.
- > Direction and/or motorised transfer trolleys.
- > Parallel supply to beam by integral conductor.

A simple solution for handling
up to 2 tonnes

EUROSYSTEM[®] *ALU*



Distributor stamp

2, boulevard de l'Industrie - B.P. 20059
28509 Vernouillet cedex - France
Phone : (33) 02 37 38 95 95
Fax : (33) 02 37 38 95 99
Internet : www.verlinde.com

Réf : JV 06 2008 533 UGB



VERLINDE[®]
L I F T I N G E Q U I P M E N T