

What is VERLINDE?:

- The N° 1 French manufacturer and exporter of hoisting and handling equipment.
- The Power of a group employing 5000 people.
- A complete range of 30 hoisting products.
- ISO 9001 quality assurance certification.
- Your advisor and recourse in over 80 countries.

In France

9 Sales agencies, 24 after-sales service stations, 11 EUROPONT rolling beam production plants and a network of distributors.

Elsewhere throughout the world:

Agencies in Germany, the Netherlands, Belgium, Italy and distributors in Africa, Corea, Germany, Spain, Argentina, Austria, Brazil, Chile, Ireland, the United Kingdom, Sweden, Norway, Denmark, China, Thailand, Indonesia, Vietnam, Malaysia, the United States...



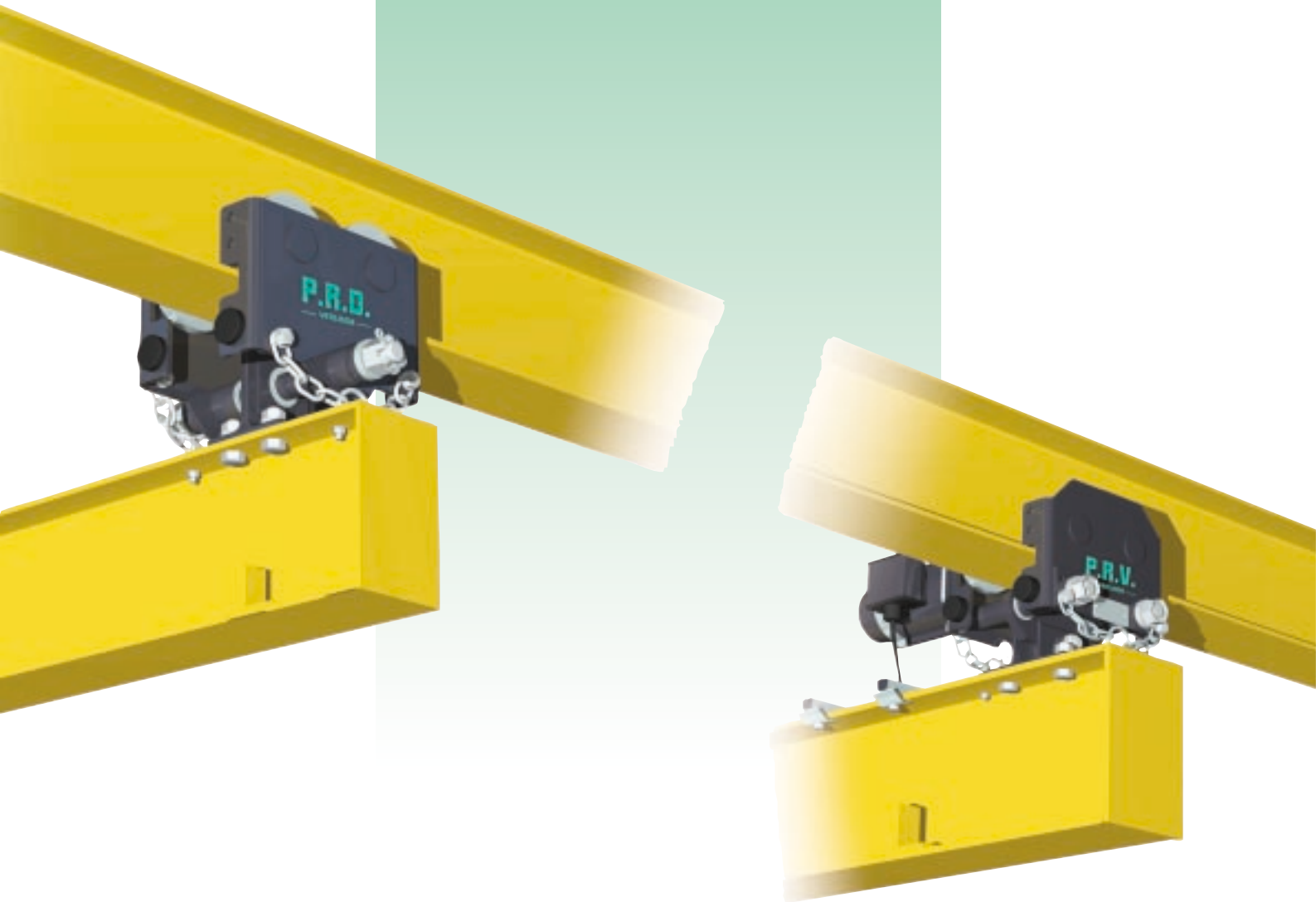
2, boulevard de l'Industrie - B.P. 20059 - 28509 Vernouillet cedex - France

Telephone: (33) 02 37 38 95 95 - Fax: (33) 02 37 38 95 99

Internet : www.verlinde.fr

JV 03 05 125

P.R.D. - P.R.V.



Trolleys
for making articulated rolling beams,
hand or electric-powered,
for loads of 250 to 2500 kg.



2, boulevard de l'Industrie - B.P. 20059 - 28509 Vernouillet cedex - France

Telephone: (33) 02 37 38 95 95 - Fax: (33) 02 37 38 95 99

Internet : www.verlinde.fr

JV 03 05 125

The solution
for low costs

P.R.D.

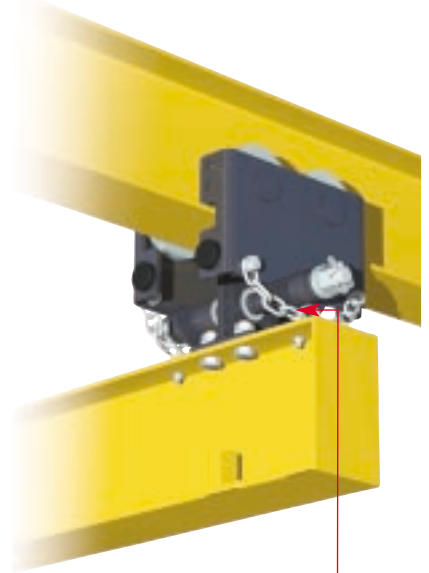
Trolleys for making hand-powered articulated rolling beams for loads of 500 to 2500 kg.

TECHNICAL CHARACTERISTICS

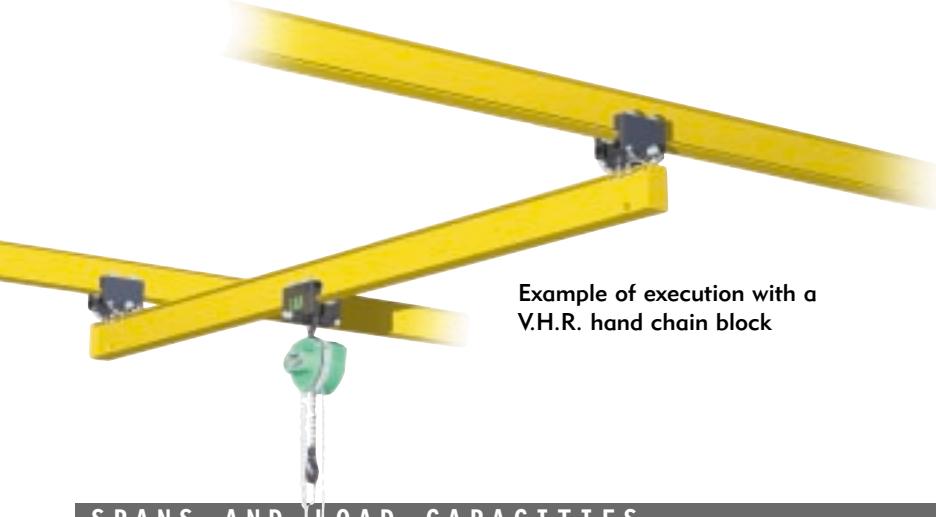
The ideal partner for this articulated rolling beam is a hand-powered chain hoist.

The PRD trolley kit consists of:

- A pair of trolleys each fitted with four steel rollers (mounted on ball bearings)
- The adjustment of the roller raceway profile consists of a treated steel tie-bar
- 4 anti-drop rollers (in compliance with legislation)
- A coupling consisting of a strap piece in die-stamped steel and 2 articulations, one of which is mounted on a ball and socket joint
- The assembly boltwork.
- Assembly documentation.



As optional extra: 2 safety chains. The purpose of this system is to restore the link between the trolleys and beam in the event of failure of the coupling linking the trolleys to the beam.



Example of execution with a V.H.R. hand chain block

SPANS AND LOAD CAPACITIES

	1 m	2 m	3 m	4 m	5 m	6 m	7 m	8 m
500 kg								
1000 kg								
1600 kg								
2000 kg								
2500 kg								

Trolley PRD 5 ■ Trolley PRD 10 ■ Trolley PRD 20 ■ Trolley PRD 32 ■

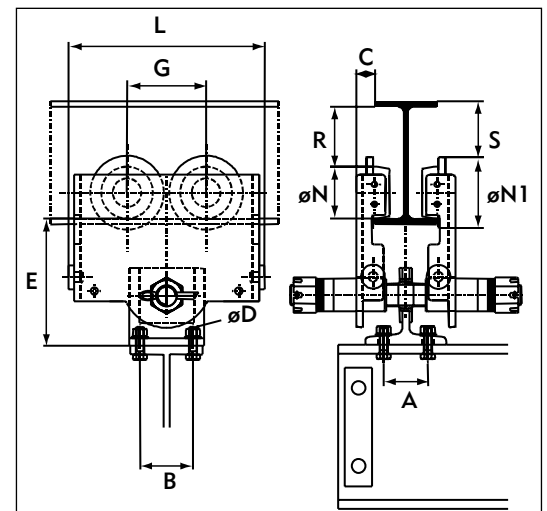
OPTIONS

- Hand chain block or electric hoist
- Travelling trolley

OVERALL DIMENSIONS

Type of beam trolley	A	B	C	ØD	E	G	L	ØN	ØN1	R*	S*
PRD 5	65	42 à 64	19	HM 10-30 class 8-8	145	84	202	55	79	109	106
PRD 10	65	40 à 78	23,5	HM 12-35 class 8-8	167	101	241	60	92	66	57
PRD 20	65	48 à 78	27	HM 14-40 class 8-8	185	116	288	76	104	88	82
PRD 32	65	48 à 94	32	HM 16-45 class 8-8	232	144	358	96	131	68	61

* The clearances are indicated based on the minimum profile served by each trolley.



the performance solution

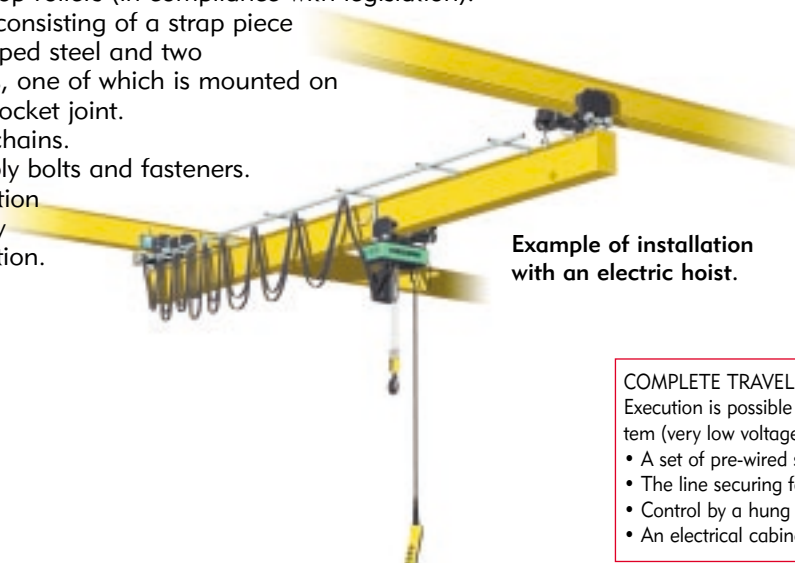
P.R.V.

Trolleys for making hand-powered articulated rolling beams for loads of 500 to 2500 kg.

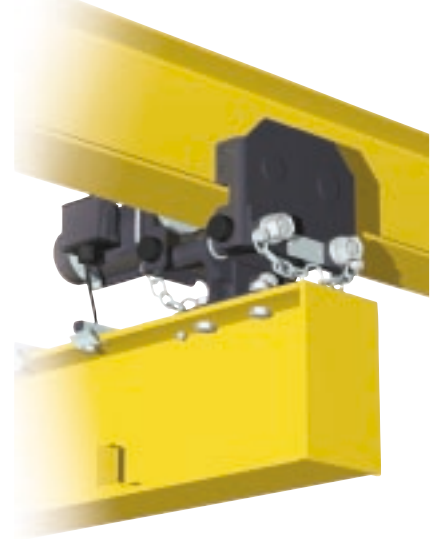
TECHNICAL CHARACTERISTICS

Of highly compact design and requiring only very little maintenance, the ideal equipment for this articulated travelling beam is an electrically-powered chain hoist. The PRV trolley consists of the following :

- The electrical equipment for a 380V to 460V/3ph/50Hz power supply
- A pair of electric trolleys capable of running at variable speed (5 to 20 m/mn), single speed (5 or 10 m/min) or two speeds (10/2.5 or 20/5 m/min), each equipped with 4 cast iron rollers (2 driving and 2 support rollers), mounted on ball bearings and adjustable, with gears cut and rims machined to run on all types of raceway
- Four anti-drop rollers (in compliance with legislation).
- A coupling consisting of a strap piece in die-stamped steel and two articulations, one of which is mounted on a ball-and-socket joint.
- Two safety chains.
- The assembly bolts and fasteners.
- Documentation for assembly and installation.



Example of installation with an electric hoist.



COMPLETE TRAVELLING MOVEMENT ELECTRICAL KIT.

Execution is possible only in the case of a complete electric hoist control system (very low voltage version) and PRV type electric-powered trolley.

- A set of pre-wired supply and control lines (accessories and boltwork)
- The line securing fasteners
- Control by a hung pendant pushbutton box
- An electrical cabinet

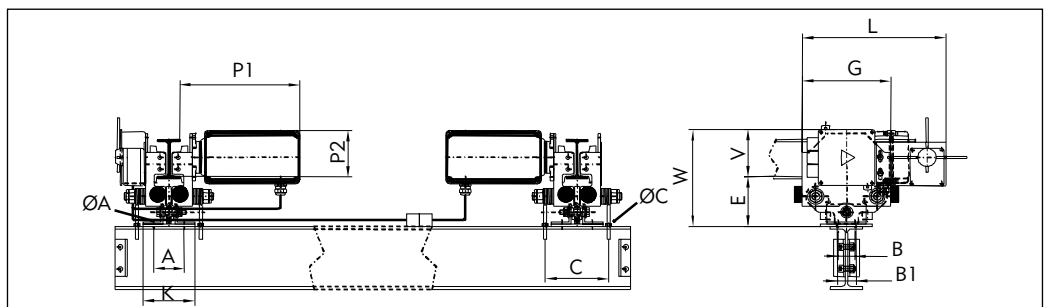
SPANS AND LOAD CAPACITIES

	1 m	2 m	3 m	4 m	5 m	6 m	7 m	8 m	9 m	10 m	11 m	12 m
250 kg												
500 kg												
1000 kg												
1500 kg												
2000 kg												

Trolley PRV 1 ■ Trolley PRV 2 ■ Trolley PRV 3 ■

OPTIONS

- Type VHR hand or electric hoist of EUROCHAIN VL type
- travelling movement box
- complete travelling movement electrical kit
- travel limit switch
- slow variable speed (3 to 10 m/min)
- other voltages (230 to 575 V)



OVERALL DIMENSIONS

Type of beam trolley	A	ØA	B	B1	C	ØC	D	E	G	K	L	ØN	ØN1	P1	P2	V	W	Reaction max by trolley
PRV 1	76	10	42 à 64	48	see NOTE	8	45	126	108	130	360	62	93	302	116	119	245	1000
PRV 2	112	14	48 à 94	60		10	50	180	135	170	420	82	120	340	126	118	298	2000
PRV 3	112	16	48 à 94	60		10	50	180	165	170	482	100	150	340	136	128	308	3200

NOTE : PRV 1 C = C = width of profile + 70 minimum + motor without gearbox
 PRV 2 et 3 C = width of profile + 76 minimum 200 mm + motor with gearbox